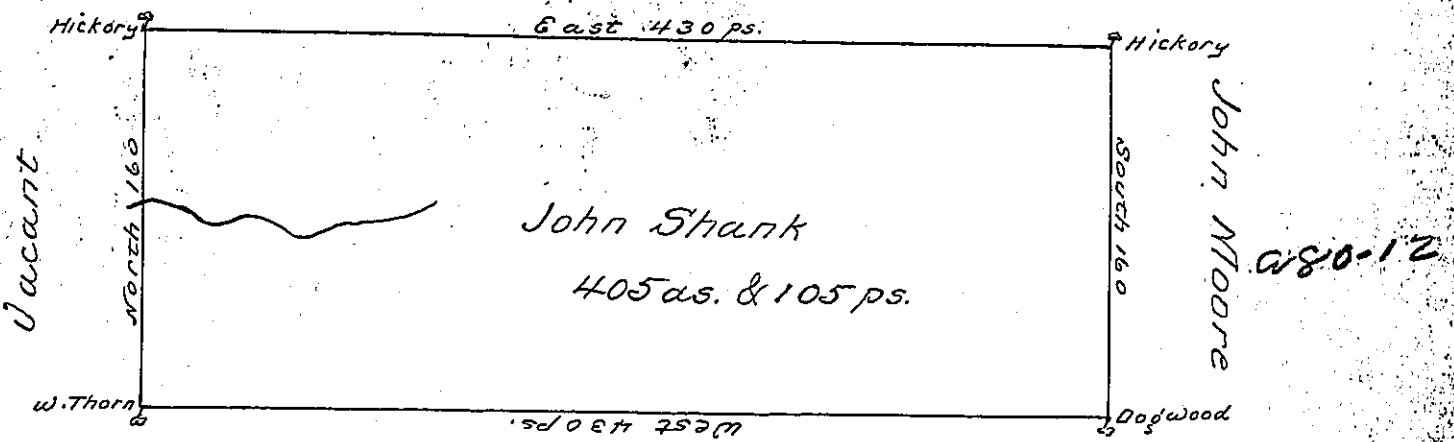


Old Surveys



John Faberman

672-297

Situated on the waters of Two Kick Creek including many good springs, in Wheatfield Township, Westmoreland County, containing 405 acres & 105 perches and allowance for Roads &c. Surveyed for John Shank the 27th day of Novr 1794 on Warrant dated the 3rd day of May 1793.

James Rose L.S.
Daniel Brodhead Esqr. S.G.

IN TESTIMONY that the above is a copy of the original remaining on file in the Department of Internal Affairs of Pennsylvania, made conformably to an Act of Assembly approved the 16th day of February, 1833, I have hereunto set my Hand and caused the Seal of said Department to be affixed at Harrisburg, this first day of April 1902



James W. Latta
Secretary of Internal Affairs.